



4 Oakwood Close
Kettering, NN14 2GQ



Simpson Ellson

Our second off-market sale this week highlights the strength of our proactive approach — successfully introducing motivated, registered buyers to the right properties before they go live. By working closely with our buyer database, we continue to deliver results quickly and discreetly. Register your details today for exclusive early access to upcoming homes.

This beautifully presented four-bedroom detached home is truly turn-key ready, finished to an exceptional standard throughout.

Recent upgrades include a stunning new kitchen with integrated appliances, complemented by a separate utility space. The home has been tastefully redecorated, including the lounge, dining room, hallway, landing, and staircase, creating a fresh and modern feel.

The property offers:

- Four generous double bedrooms, all with built-in wardrobes
- A stylish family bathroom, en-suite, and ground floor W/C, all recently refitted
- A spacious and inviting living and dining area

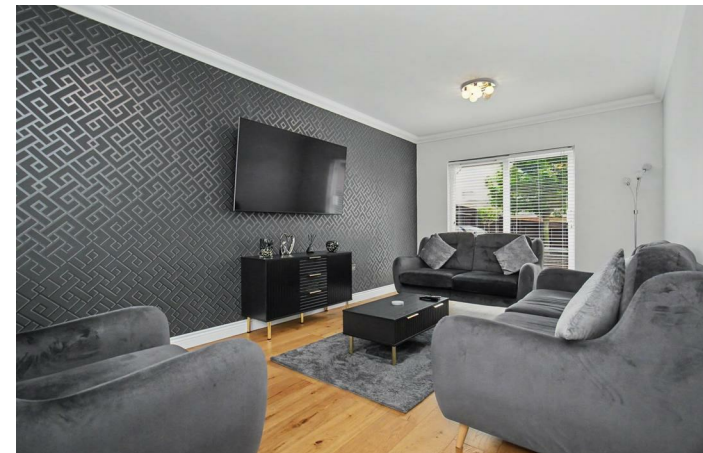
Externally, the property is equally impressive. The landscaped garden features sleeper borders, a patio seating area, and a dedicated section housing a jacuzzi — perfect for relaxing or entertaining.

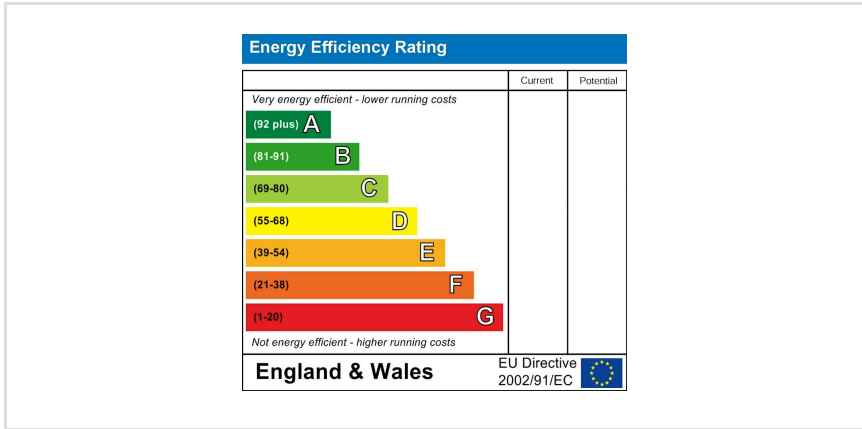
Additional benefits include side access, off-road parking, and a garage.

Rarely does a property combine such high internal specification with equally attractive outdoor space.

Contact us today to register your details and secure exclusive access to similar properties before they reach the open market.

£350,000







**Simpson
Ellson**

T: 01536 645960

E: rothwell@simpsonellson.co.uk



01536 645960

rothwell@simpsonellson.co.uk

<https://www.simpsonellson.co.uk>

32 High Street, Rothwell, Northants, NN14 6BQ